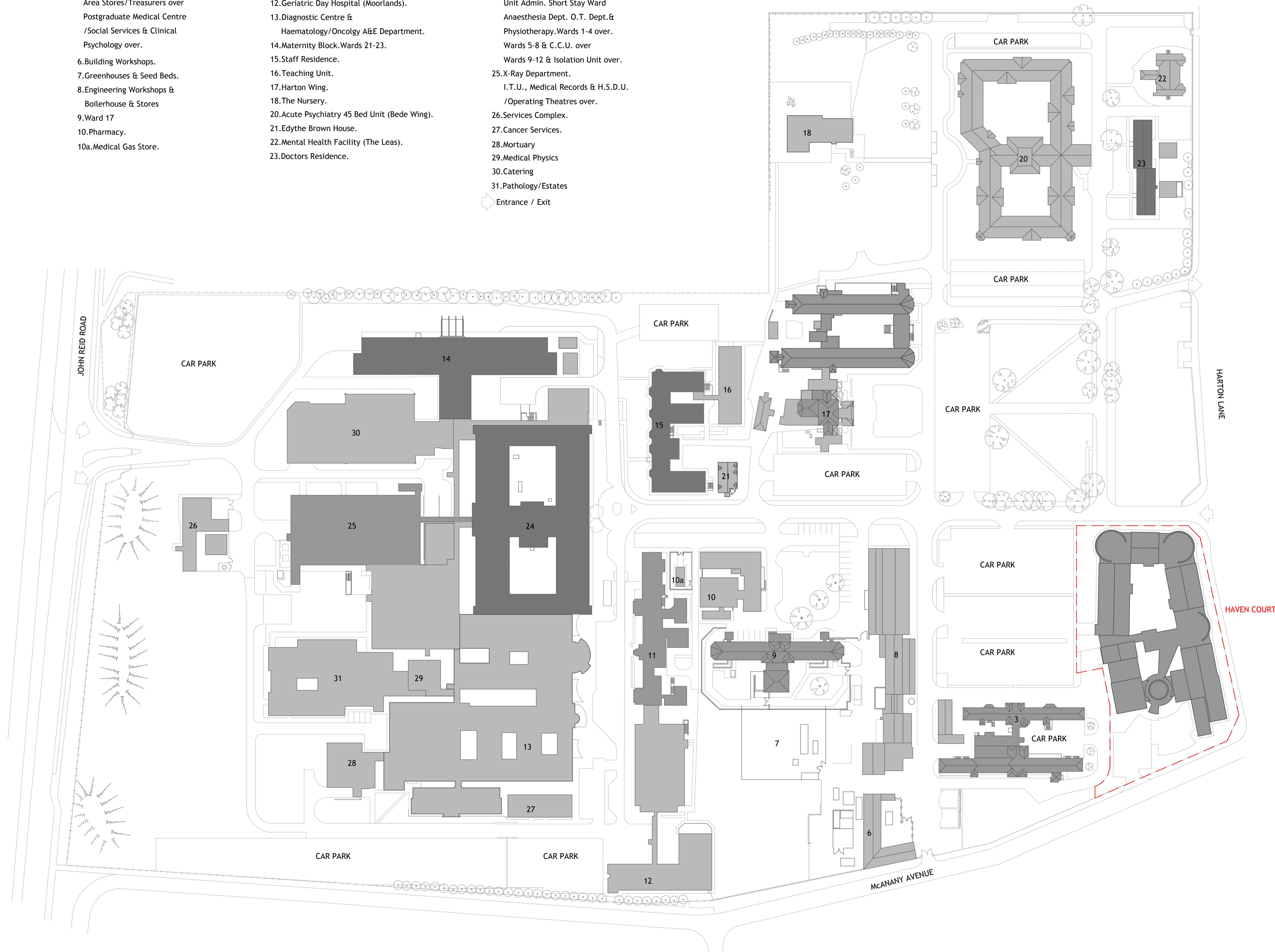


Revisions		
By	Details	Date
MC	Social Club (Block 5 Demolished 2010)	22.09.10
MC	A&E Site compound / Entrance updated	22.09.10
MC	Emergency Care and Ingham Wing Roadworks updated	14.02.12
MC	Haven Court added	09.08.16

**KEY**

- 3. East Block
- Area Stores/Treasurers over
- Postgraduate Medical Centre
- /Social Services & Clinical Psychology over.
- 6. Building Workshops.
- 7. Greenhouses & Seed Beds.
- 8. Engineering Workshops & Boilerhouse & Stores
- 9. Ward 17
- 10. Pharmacy.
- 10a. Medical Gas Store.
- 11. Ward 19/Ward 18 over, Ward 20.
- 12. Geriatric Day Hospital (Moorlands).
- 13. Diagnostic Centre & Haematology/Oncology A&E Department.
- 14. Maternity Block. Wards 21-23.
- 15. Staff Residence.
- 16. Teaching Unit.
- 17. Harton Wing.
- 18. The Nursery.
- 20. Acute Psychiatry 45 Bed Unit (Bede Wing).
- 21. Edythe Brown House.
- 22. Mental Health Facility (The Leas).
- 23. Doctors Residence.
- 24. Ingham Wing. Main Entrance Unit Admin. Short Stay Ward Anaesthesia Dept. O.T. Dept. & Physiotherapy. Wards 1-4 over. Wards 5-8 & C.C.U. over Wards 9-12 & Isolation Unit over.
- 25. X-Ray Department. I.T.U., Medical Records & H.S.D.U. /Operating Theatres over.
- 26. Services Complex.
- 27. Cancer Services.
- 28. Mortuary
- 29. Medical Physics
- 30. Catering
- 31. Pathology/Estates
- Entrance / Exit



South Tyneside <b>NHS</b> <small>NHS Foundation Trust</small>	
South Tyneside District Hospital South Shields, Tyne & Wear, NE34 0PL. Tel: 0191 4041000 Fax: 0191 4277571 Email: capital.projects@stft.nhs.uk	
Scheme <b>SOUTH TYNESIDE DISTRICT HOSPITAL</b> Estate Record Drawing	Title Site Plan
Drawn MC Date 15.03.10	
Scale 1:1000 (A1)	Fixing Dimensions Must NOT be Scaled from this Drawing.
Drg. No. 01 / 00 / 01_SITE	